

# 444F2

## Backhoe Loader



### **Cab**

The introduction of the new cab to the Cat® Backhoe Loader provides a comfortable and easy to use operator environment. With the ability to customize many of the machine's features, the all new cab allows the operator to perform in greater comfort and enjoy the latest technologies available on today's generation of backhoe loaders.

### **Cat C4.4 ACERT™ Diesel Engines**

The latest in clean emissions technology. Cat C4.4 ACERT engines utilize enhanced electronic control which fully optimizes engine speed to the application. Turbocharging with smart wastegate for fast response, high power, and increased torque. A combination of low sulfur diesel and diesel exhaust fluid (DEF) helps these engines meet the latest EU Stage IV emission standards.

### **Easing Your Workload**

Here at Caterpillar we understand that the role of a modern day Backhoe Loader operator can be demanding. Therefore the F2 Series machines have been developed with this in mind and offer a number of functions and options to help reduce the load on the operator; helping to maintain high productivity, controllability and comfort during those longer days. A new instrument panel with LCD display gives the operator quick access to the important information they need as well as allowing personalization of the machine to assist with operation, with features which include adjustable hydraulic flow control. With this and the introduction of features such as: ECO mode, Product Link™ and Bluetooth hands free, this machine really allows the operator to perform in comfort and safety while being in full control and having all the information needed to achieve the highest productivity possible.

### **Fuel Reduction**

We know that the ever-increasing price of fuel is a concern to today's customer. That's why we developed a unique fuel saving ECO mode to keep running costs to a minimum without impacting on operating performance.

### **Intelligent Hydraulics**

The F2 Series continues to offer load sensing hydraulics combined with full flow sharing technology. With our intelligent hydraulics technology, you get the flow you need, when you need it, where you need it most.

### **Secure Your Investment**

Protect your Backhoe Loader with the latest security technology. Select from built-in keypads, vandal guards, and the latest version of Product Link so you always know your machine is secure.

### **Hydraulics**

The F Series hydraulics have been given a boost on the new F2 machine. Increasing the pump capacity to give a greater flow rate will now allow the operator more hydraulic performance at their fingertips. The hydraulic system has been designed to work in tandem with the new ECO mode, providing fuel savings while not hindering high hydraulic performance.



# 444F2 Backhoe Loader Specifications

## Engine

	<b>EU Stage IV Standard Offering</b>	<b>EU Stage IV Optional Offering</b>
Model	C4.4 ACERT Electronic Turbo Intercooled	C4.4 ACERT Electronic Turbo Intercooled
Rated Power (standard) @ 2,200 rpm		
Gross Power ISO 14396	74.4 kW/ 101 hp	82 kW/ 112 hp
Net Power Rating at 2,200 rpm		
ISO 9249	70 kW/ 95 hp	77.6 kW/ 106 hp
EEC 80/1269	70 kW/ 95 hp	77.6 kW/ 106 hp
Torque Rise (net) at 1,400 rpm	46%	32%
Maximum Torque (at 1,400 rpm)	450 N·m	450 N·m
Bore	105 mm	105 mm
Stroke	127 mm	127 mm
Displacement	4.4 L	4.4 L

- Net power advertised is the power available at the flywheel when the engine is equipped with fan, air cleaner, muffler and alternator.
- No derating required up to 2286 m altitude. Auto derate protects hydraulic and transmission systems.
- Meets EU Stage IV emission standards.

## Transmission

Travel speeds of Two Wheel Drive backhoe loader at full throttle, when equipped with 440/80R28 rear tires and HRC 74.5 kW engine.

	<b>Auto-Shift</b>	<b>Auto-Shift* (Lock-Up)</b>
<b>Forward</b>		
1st	6 km/h	6 km/h
2nd	10 km/h	10 km/h
3rd	12 km/h	12 km/h
4th	20 km/h	20 km/h
5th	27 km/h	25 km/h
6th	40 km/h	40 km/h
<b>Reverse</b>		
1st	6 km/h	6 km/h
2nd	13 km/h	13 km/h
3rd	27 km/h	27 km/h

\*Auto-shift (lock up) is an optional extra.

## Service Refill Capacities

Cooling System	22 L
Fuel Tank	160 L
Engine with Oil Filter	7.6 L
Diesel Exhaust Fluid	19 L
<b>Transmission (Auto-Shift)</b>	
AWD	19 L
<b>Rear Axle</b>	
Center Housing	16 L
Planetaries	1.7 L
<b>Front Axle (AWD)</b>	
Center Housing	14 L
Planetaries	1.7 L
Hydraulic System	95 L
Hydraulic Tank	40 L

## Hydraulic System

Type	Closed Center
Pump Type	Variable-flow, Axial Piston
Maximum Pump Capacity	163 L/min
<b>System Pressure</b>	
Backhoe	250 Bar
Loader	250 Bar

## Noise Level

Inside Cab	74 dB(A)
Outside Cab	100 dB(A)

# 444F2 Backhoe Loader Specifications

## Weights\*

Operating Weight	9606 kg
Operating Weight (Maximum) (ROPS Capacity)	11 500 kg
Ride Control	11 kg
Air Conditioning	34 kg
MP Bucket (1.15 m <sup>3</sup> /1.50 yd <sup>3</sup> )	
with fold-over forks	927 kg
without fold-over forks	767 kg
Loader, IT with QC	365 kg
4.3 m Stick (excludes ft. counterweight)	199 kg
4.9 m Stick (excludes ft. counterweight)	354 kg
Maximum Counterweight	115 kg

	Pin On	Quick Coupler
Minimum Counterweight Recommendations – Standard Stick		
Loader Bucket		
GP	0 kg	115 kg
MP	0 kg	115 kg
Minimum Counterweight Recommendations – Extendible Stick		
Loader Bucket		
GP	0 kg	115 kg
MP	0 kg	115 kg
Total Gross Weight Not to Exceed	11 500 kg	

\*Machine Configuration – HRC 74.5 kW engine, standard stick hoe, standard cab with A/C, AWD autoshift transmission, 1.3 m<sup>3</sup> MP loader bucket, 24" standard duty hoe bucket, 440/80R28 tires, no counterweight, 80 kg operator, full fuel tank.

## Axles

All Wheel Drive (AWD)

### Features

- Heavy-duty rear axle with self adjusting inboard brakes, differential lock and final drives.
- AWD is engaged by front console panel switch or by brake pedal during all-wheel-braking operation. AWD can be engaged on the move, under load, in any gear, forward or reverse. AWD has outer final drives for easy maintenance.
- AWD front axle is pendulum mounted and permanently sealed and lubricated, requiring no daily maintenance. Also features double-acting steering cylinder with 52° steering angle for increased maneuverability.

## Axle Ratings

Front Axle, AWD	
Static	22 964 kg
Dynamic	9186 kg
Rear Axle	
Static	22 964 kg
Dynamic	9186 kg

## Steering

Type	Front Wheel
Power Steering	Hydrostatic
AWD Cylinder, one (1) double-acting	
Bore	65 mm
Stroke	120 mm
Rod Diameter	65 mm
Axle Oscillation	7 mm

## Turning Circle

AWD (inner wheel not braked)	
Outside Front Wheels	9.8 m
Outside Widest Loader Bucket	12.59 m

## Brakes

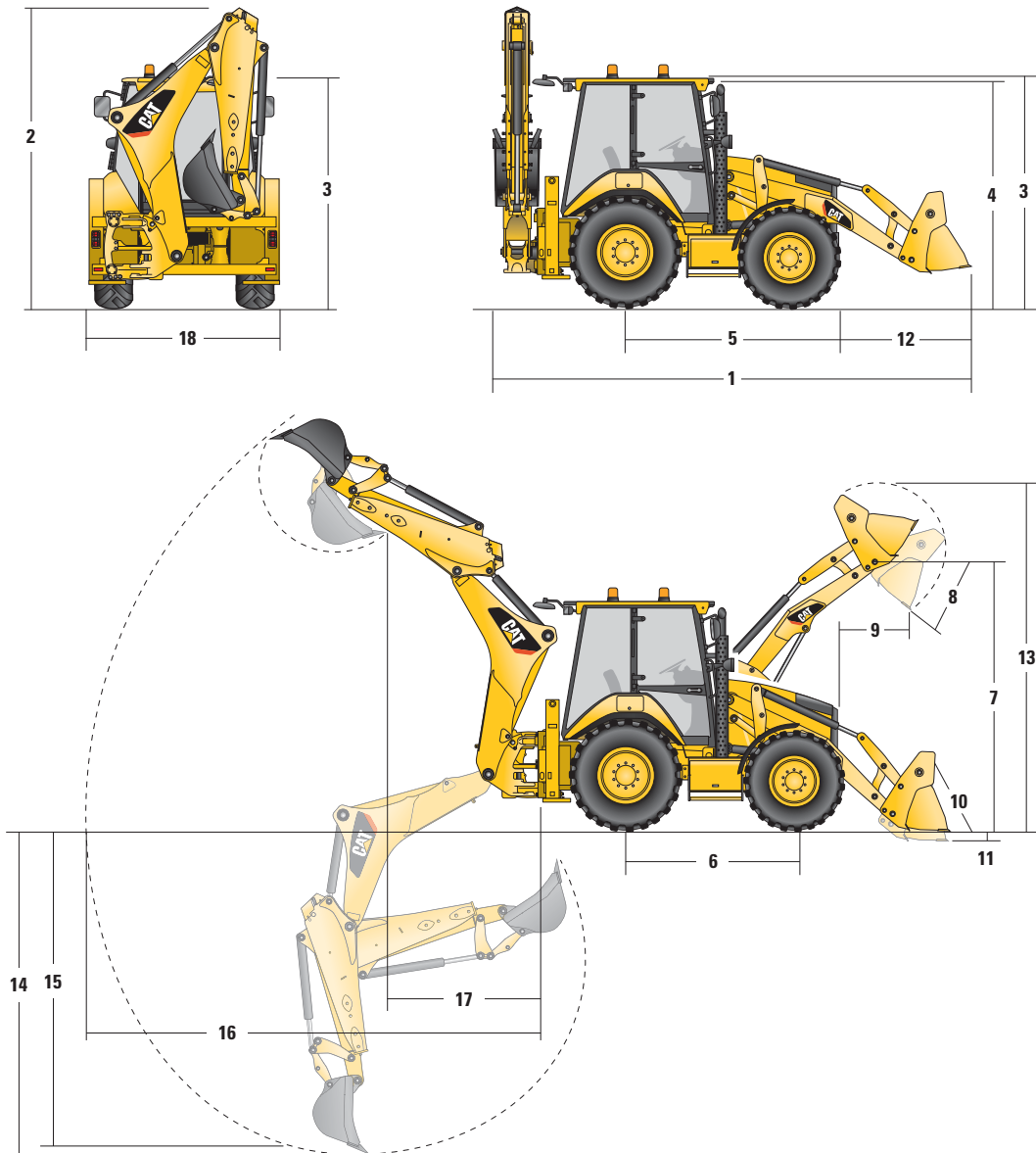
Fully enclosed boosted, hydraulic, multiple discs.

### Features

- Inboard oil-immersed, hydraulically actuated multiple Kevlar discs on final drive input shaft.
- Completely enclosed and sealed.
- Self-adjusting.
- Dual foot-operated boosted brake pedals can be interlocked for roading.
- Parking/secondary brakes are independent of the service brake system. Parking brake is mechanically applied through a hand lever located in the right side console.
- Meets ISO 3450:1996 requirements.

# 444F2 Backhoe Loader Specifications

## Machine Dimensions



	GP – 1.3 m <sup>3</sup>	MP – 1.3 m <sup>3</sup>	MP with forks – 1.3 m <sup>3</sup>	GP/QC – 1.3 m <sup>3</sup>	MP/QC – 1.3 m <sup>3</sup>
<b>1</b> Overall Length in Rooding Position	5743 mm	5743 mm	5740 mm	5879 mm	5902 mm
Overall Transportation Length	5751 mm	5751 mm	5751 mm	5965 mm	6010 mm
<b>2</b> Overall Transport Height – 4.3 m stick	3829 mm	3829 mm	3829 mm	3829 mm	3829 mm
Overall Transport Height – 4.9 m stick	4008 mm	4008 mm	4008 mm	4008 mm	4008 mm
Overall Width	2322 mm	2322 mm	2322 mm	2322 mm	2322 mm
<b>3</b> Height to Top of Cab/Canopy	2897 mm	2897 mm	2897 mm	2897 mm	2897 mm
<b>4</b> Height to Top of Exhaust Stack	2754 mm	2754 mm	2754 mm	2754 mm	2754 mm
<b>5</b> Rear Axle Centerline to Front Grill	2795 mm	2795 mm	2795 mm	2795 mm	2795 mm
<b>6</b> Wheelbase AWD	2235 mm	2235 mm	2235 mm	2235 mm	2235 mm

Dimensions and performance specifications shown are for machines equipped with 440/80R28 tires, standard cab, standard stick with 24 inch standard duty bucket, and 1.3 m<sup>3</sup> MP loader bucket and standard equipment unless otherwise specified.

# 444F2 Backhoe Loader Specifications

## Loader Bucket Dimensions and Performance

	GP – 1.3 m <sup>3</sup>	MP – 1.3 m <sup>3</sup>	MP with forks – 1.3 m <sup>3</sup>
Capacity	1.30 m <sup>3</sup>	1.30 m <sup>3</sup>	1.30 m <sup>3</sup>
Width	2434 mm	2434 mm	2434 mm
Lift Capacity at Maximum Height	4661 kg	4329 kg	4150 kg
Lift Breakout Force	61.5 kN	58.8 kN	56.8 kN
Tilt Breakout Force	63.1 kN	63.4 kN	62.0 kN
Tipping Load at Breakout Point	7025 kg	6838 kg	6656 kg
<b>7</b> Maximum Hinge Pin Height	3567 mm	3567 mm	3567 mm
<b>8</b> Dump Angle at Full Height	45°	45°	45°
Dump Height at Maximum Angle	2794 mm	2809 mm	2809 mm
<b>9</b> Dump Reach at Maximum Angle	923 mm	908 mm	908 mm
<b>10</b> Maximum Bucket Rollback at Ground Level	43°	43°	43°
<b>11</b> Digging Depth	105 mm	105 mm	105 mm
Maximum Grading Angle	111°	111°	111°
<b>12</b> Grill to Bucket Cutting Edge, Carry Position	1480 mm	1464 mm	1466 mm
<b>13</b> Maximum Operating Height	4435 mm	4512 mm	4390 mm
Bucket Weight (Excluding Teeth or Forks)	460 kg	752 kg	927 kg

## Backhoe Dimensions and Performance

	Standard Stick – 4.3 m	E-stick Retracted – 4.3 m	E-stick Extended – 4.3 m	E-stick Retracted – 4.9 m	E-stick Extended – 4.9 m
<b>14</b> Digging Depth, SAE Maximum	4331 mm	4335 mm	5312 mm	4686 mm	5707 mm
Digging Depth, Manufacturer's Maximum	4738 mm	4743 mm	5660 mm	5168 mm	6129 mm
<b>15</b> Digging Depth, 2400 mm Flat Bottom	3956 mm	3960 mm	5022 mm	4341 mm	5416 mm
Digging Depth, 600 mm Flat Bottom	4288 mm	4291 mm	5278 mm	4654 mm	5671 mm
Digging Depth, 600 mm Flat Bottom, Manufacturer's	4718 mm	4723 mm	5660 mm	5133 mm	6115 mm
Reach from Rear Axle Centerline at Ground Line	6742 mm	6748 mm	7673 mm	7219 mm	8171 mm
<b>16</b> Reach from Swing Pivot at Ground Line	5652 mm	5658 mm	6583 mm	6129 mm	7081 mm
Maximum Operating Height	5596 mm	5595 mm	6163 mm	6172 mm	6869 mm
Loading Height	3927 mm	3938 mm	4505 mm	4495 mm	5192 mm
<b>17</b> Loading Reach	1808 mm	1758 mm	2641 mm	1696 mm	2482 mm
Swing Arc	180°	180°	180°	180°	180°
Bucket Rotation	205°	205°	205°	205°	205°
<b>18</b> Stabilizer (overall width)	2352 mm	2352 mm	2352 mm	2352 mm	2352 mm
Bucket Dig Force	63.4 kN	63.4 kN	63.4 kN	63.4 kN	63.4 kN
Stick Dig Force	42.7 kN	43.5 kN	31.6 kN	47.2 kN	35.1 kN

Dimensions and performance specifications shown are for machines equipped with 440/80R28 tires, standard cab, standard stick with 24 inch standard duty bucket, and 1.3 m<sup>3</sup> MP loader bucket and standard equipment unless otherwise specified.

# 444F2 Backhoe Loader Standard and Optional Equipment

## Standard and Optional Equipment

Standard and Optional equipment may vary. Consult your Cat dealer for details.

	Standard	Optional		Standard	Optional
<b>Cab ROPS and FOPS</b>			<b>Field Installed Attachments</b>		
Cab, Deluxe	—	✓	Powered Side Shift (PSS)	—	✓
Cab, Standard	✓	—	<b>Boom Sticks and Linkages – Backhoe</b>		
*See Cab Options Page			Quick Coupler, Hydraulic	—	✓
<b>Tires/Steering/Brakes</b>			Quick Coupler, Mechanical	—	✓
All Wheel Drive	✓	—	Stick, Extending (4.3 m)	—	✓
All Wheel Steering	✓	—	Stick, Extending (4.9 m)	—	✓
100% Differential Lock	✓	—	Stick, Standard (4.3 m)	✓	—
Hydraulic Boosted Brakes (dual pedals)	✓	—	Transport Lock, Swing	✓	—
Tires 24 inch	✓	—	Transport Lock, Boom	✓	—
Tires 28 inch	—	✓	<b>Boom Sticks and Linkages – Loader</b>		
<b>Engine/Transmission</b>			Loader Cutting Edge (2 pieces)	—	✓
Battery 750 CCA, Maintenance Free (standard)	✓	—	Quick Coupler, Hydraulic	—	✓
Battery 750 CCA, Maintenance Free (heavy duty)	—	✓	<b>Hydraulics</b>		
Hinged Radiator Unit for Simple Debris Removal	✓	—	Hydraulic Pump (163 L/min)	✓	—
Auto Idle	✓	—	Hydraulic Quick Disconnects (twist to connect)	—	✓
ECO Mode	✓	—	Programme Auxiliary Flows	✓	—
Engine 74.5 kW (101 hp) Cat C4.4 ACERT	✓	—	Side Shift Lock (electro-hydraulic)	—	✓
Engine 82 kW (112 hp) Cat C4.4 ACERT	—	✓	Hydraulic Oil Cooler	✓	—
Engine Block Heater	—	✓	<b>Hydraulics – Backhoe</b>		
Jump Start Connector	✓	—	Hydraulic Lines, 1-Way	—	✓
Transmission Neutralizer	✓	—	Hydraulic Lines, 2-Way	—	✓
Transmission, 6-Speed Automatic	✓	—	Hydraulic Continuous Flow	—	✓
Transmission, 6-Speed Automatic (torque lock-up)	—	✓	<b>Hydraulics – Loader</b>		
<b>Input</b>			Loader Kickout, Float	✓	—
Controls, Pilot (Servo) Joysticks	✓	—	Loader Kickout, Return to Dig	✓	—
Pattern Selector (ISO/SAE)	✓	—	Auto Ride Control	—	✓
Power Steering, Hydrostatic	✓	—	Parallel Lift	✓	—
<b>Other Attachments</b>			<b>Electrical</b>		
Counterweight, 115 kg	—	✓	Product Link, Cellular	—	✓
Front Fenders	—	✓	Product Link, Satellite	—	✓
Street Pads, Stabilizers	—	✓	Reversing Alarm	✓	—
Tool Storage Box	✓	—	Stabilizer Alarm	✓	—
Transport Tie-downs	✓	—	Beacon, Strobe	—	✓
<b>Guards</b>			Beacon, Rotating	—	✓
Guard, Teeth (GP/MP)	—	✓			
Guard, Driveshaft	—	✓			
Guard, Tail Lights	—	✓			
Loader Safety Brace	✓	—			
Object Handling Kit	—	✓			

# 444F2 Backhoe Loader Standard and Optional Equipment

## Cab Options

	Standard	Deluxe
Air Recirculation Control	—	✓
Air Conditioning	Optional	Optional
Auto-Up Stabilizers	—	✓
Beacon Socket (×2)	✓	✓
Brake Pedals Operable Independently and Interlocked	✓	✓
Cab Heater	✓	✓
Cab Internal Light	✓	✓
Cab Internal Light (courtesy)	—	✓
Cup Holders (×2)	✓	✓
Differential Lock Button on Loader Control	✓	✓
F/N/R* Functions on Loader Control	✓	✓
Face Fan	Optional	Optional
Front and Rear Side Opening Windows	✓	✓
Front Headlights**	✓	✓
Full Width Perforated Sun Visor	✓	✓
Fully Adjustable Work Lights (×8)	✓	✓
Gauge Cluster with LCD Display	✓	✓
Horn, Front	✓	✓
Horn, Joystick	✓	✓
Horn, Rear	✓	✓
Instrument Panel Vandal Guard	✓	✓

	Standard	Deluxe
Internal Power Socket (2)	✓	✓
Kickdown Function on Loader Control	✓	✓
Left Hand Storage Console	✓	✓
Multi-directional Backhoe Control Pods (infinitely adjustable)	✓	✓
Radio, Entry Level	Optional	Optional
Radio, Premium	Optional	Optional
Rear Tail Lights (LED)	✓	✓
Removable Floor Mat	✓	✓
Safety Lock, Hydraulics	✓	✓
Safety Lock, Transmission	✓	✓
Seat, Deluxe Fabric	—	✓
Seat, Deluxe Fabric Heated	Optional	Optional
Seat, Fabric	✓	—
Security Keypad	—	—
Self Cancelling Directional Indicators	✓	✓
Steering Wheel Column, Tilt and Telescopic Adjustment	—	✓
Steering Wheel Column, Tilt	✓	—
Transmission Neutralizer on Loader Control	✓	✓
Throttle, Foot	✓	✓
Throttle, Hand	✓	✓
Window Wiper Front and Rear	✓	✓

\*F/N/R – Forward/Neutral/Reverse

\*\*May vary depending on region

# 444F2 Backhoe Loader

Materials and specifications are subject to change without notice.

Featured machines in photos may include additional equipment.

For more complete information on Cat products, dealer services, and industry solutions, visit us on the web at [www.cat.com](http://www.cat.com).

© 2015 Caterpillar  
All Rights Reserved.

CAT, CATERPILLAR, SAFETY.CAT.COM, their respective logos, "Caterpillar Yellow" and the "Power Edge" trade dress, as well as corporate and product identity used herein, are trademarks of Caterpillar and may not be used without permission.

Product ID: 444F2

AEHQ7338

January 2015

